

CUTTING BLOCK CHANGE INSTRUCTIONS

1. Remove the ring grip self locking pin (Fig. 1 – Item 9).
2. Remove the metal safety guard.
3. Rotate the cam handle and knob (Fig. 3 – Items 11 and 12) toward the rear of the machine as far as it will go to expose the cutting blade assembly.
4. Loosen the two ¼-20 x ½ socket head cap screws (Fig. 1 – Item 4) by using the ⅜" Allen wrench (largest in the maintenance kit).
5. Slide the cutting block (Fig. 1 – Item 21) forward and remove it from the base unit. Do not remove the rubber cushion.
6. Place the new cutting block (Fig. 1 – Item 21) on top of the rubber cushion (Fig. 1 – Item 28).
7. Insert the two ¼-20 x ¼ socket head cap screw (Fig. 1 – Item 4) through the cutting block and rubber pad and into the cutting block until the cutting block is snug. **DO NOT OVERTIGHTEN THE SCREWS!**
8. Rotate the cam handle and knob (Fig. 3 – Items 11 and 12) toward the front of the machine, being careful to line up the grip pin holes. Insert the ring grip self-locking pin (Fig. 1 – Item 9) through the entire assembly.
9. Replace the guard. **NEVER LEAVE THE BOW MAKER UNATTENDED WITHOUT THE METAL SAFETY GUARD IN PLACE, OR THE CUTTING BLADES PINNED DOWN AGAINST THE CUTTING BLOCK.**

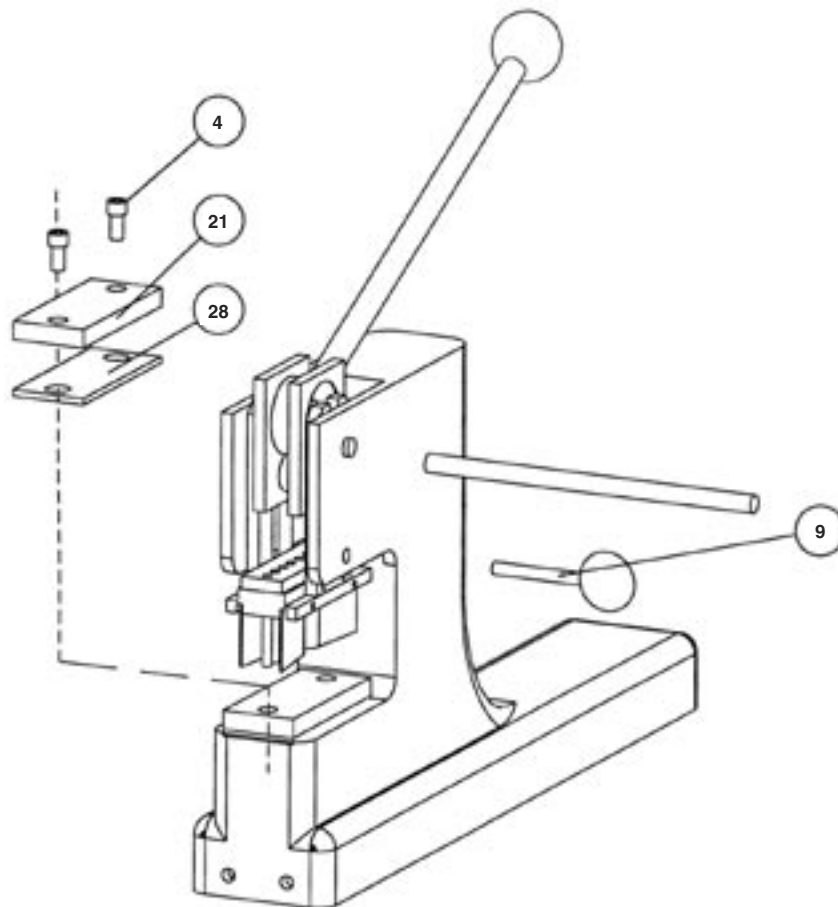


FIGURE 1 – CUTTING BLOCK CHANGE INSTRUCTIONS